



Tunnel Boring Machine for Sale

Technical Specification of the Tunnel Boring Machine EPB-2880 segmental lining

07.03.2025



Parameter	Technical Parameters	Units of measurement
Project		
Segment Dimension (OD*ID-width*bolt angle)	Φ3260/2860-1000/6+0 (standard length 995mm - 1005mm)	mm
TBM General Overview		
Model	Earth Pressure Ballance	
Excavation diameter	3412	mm



Cutterhead rotation speed	0-7.5 @ 270 bar with max. M= 571 kNm 0-3,5 @ 270 bar with max. M= 1220 kNm	RPM
Max. advance speed	80	mm/min
Maximum thrust	10200	kN
Number of jacking cylinders	12	Pcs
Total length	65	m
Shield length	7,52	m
Original total weight (TBM plus backup)	126	t
Segment Dimension (OD*ID-width*bolt angle)	Φ3260/2860-1000/6+0 (standard ring 995mm - 1005mm)	mm
Maximum operating pressure	3	bar
Total weight of TBM	75	t
vertical climbing ability	+ - 4	%
Cutterhead		
Cutterhead Spec. (Diameter × length)	Φ3388	mm
Direction of rotation	Clockwise-Counterclockwise	
Cutting tools	Возможность замены рипперов на шарошки 17"	
Central twins disc cutter (pcs/Height)		
Qty.	3	pcs
Single disc cutter		
Qty./Diameter	15	pcs
Scraper fixed at CH		
Qty. of Scraper	15	pcs
Gauge scraper/ buckets	2 x 6	
Outer ring protection bit		
Qty. of protection bits	Hard allow and hard facing	
Main drive		
Drive type	hydraulic	
Qty. of drive motors	6	group
The total power of drive	440	kW
Range of rotation speed	0-7,5	RPM
Rate torque	571/ 1220 kNm	kNm
Breakout torque	1525	kNm
Maximum operating pressure for seals	3	bar



Shield body		
Type	Flont shield pipe larger than the second pipe	
Front shield (Diameter × length)	∅ 3374	mm
Type of articulation seal	Adjustable tension	pcs
Middle shield (length)	Length about 3370	mm
Qty. of advance grouting port on the shield	6	pcs
OD/ID Diameter of tailskin	∅ 3365	mm
Qty. of tailskin lubrication injection holes	6	pcs
Tailskin grouting excluder	Through the segment body	
Tailskin clearance	10	mm
Qty. of grease pipe	2x6	pcs
Screw conveyor to the front drive		
Type	Axial	
Size	460	cm
Capacity	160	м3/ч
Power	110	kW
Max. Torque	30	kNm
Rotation speed	0-30	RPM
Ratation direction	CW-CCW	
Segment erector		
Type	Central lever drive	
Pick up method	Mechanical pin	
Qty of motor	1	pcs
Rotation speed	0~2.0	об/мин
Remove travel	1400	mm
Freedom	5	pcs
Rotation travel	±200	°
Lifting force	1200	kg
Control method	Through hydraulic valves with handles	
Thrust system		
Cylinder spec.(Bore diameter/Rod diameter)	∅ 6,5 "	mm
Cylinder stroke	66"	mm
Max. thrust speed	80	mm/мин
Total Qty. of cylinder	12	pcs
Max. working pressure	340	bar



Max. thrust force	10200	kN
Articulation system		
Type of front articulation	Active articulation	
Cylinder spec.(Bore diameter/Rod diameter-stroke)	Ø8,8"x 4,4" - 6" stroke	mm
Qty. of cylinder	2x4	pcs
Total thrust force of articulation	9600	kN
Max. working pressure	340	Bar
Harmful gas monitoring system		
Typ / location	1x methane (in the shield center)	
Typ / location	1x oxygen (shield center)	
Guidance system without standard Leika Theodolite		
PPS Tunneling System including the following equipment: 1x Router, 1x cable; 1 x documentation, 1x Touch screen for TBM installation, 1x PPS computer, Communication devices: 3 x camera; 2 x Walkie Talkie, 1 x monitor	1 pc	
Segment forms. One ring consists of 6 segments.		
Pair of segment forms C1, C2	12 pcs	
Pair of segment forms B1, B2	1	pcs
Pair of segment forms A1, A2	2	pcs
Pair of segment forms A1, A2	3	pcs
40-Foot container		
Transformer 6000 V- 400/220V 900 kVA, frequency 50 HZ, control voltage 24 VDC, weight 4265 kg	1	pcs
Electric enclosure 4000 kg	1	pcs
Cable for electric enclosure	1	pcs
barrel with tailskin grease WR89/90	1	pcs
barrel with maindrive grease S80	1	pcs
Gantry nr 6		
steel structure	1	pcs
segment crane hoist	1	pcs
Gantry nr 8		



steel structure gantry 8 major part	1	pcs
segment crane guiding rails	1	pcs
platform	1	pcs
A part of the gantry frame	1	pcs
ventilation hoses	1	pcs
Water hoses installation	1	pcs
Gantry nr 3		
Steel frame structure for gantry 3	1	pcs
Pump	1	pcs
Cables	1	pcs
platform	1	pcs
Documentation of TBM and gantry system: manual, hydraulic diagram, mechanical drawings, segment drawings	1	pcs
Vacuum lifter and rotation device	1	pcs
Rails 591 pieces of 8 m long rails S18	1	pcs
Sleepers for 500 meters of double tunnel and 1000 meters of single tunnel	1	pcs
Switch	1	pcs





SMP Engineering
LLC

26 W Fabish Dr.,
Buffalo Grove, IL, 60089
+1 847 997 39 17



SMP Engineering
LLC

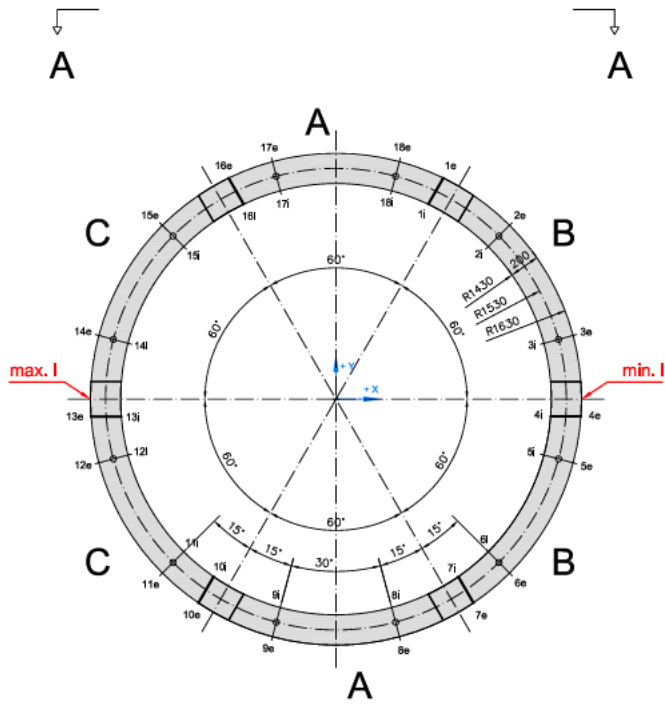
26 W Fabish Dr.,
Buffalo Grove, IL, 60089
+1 847 997 39 17





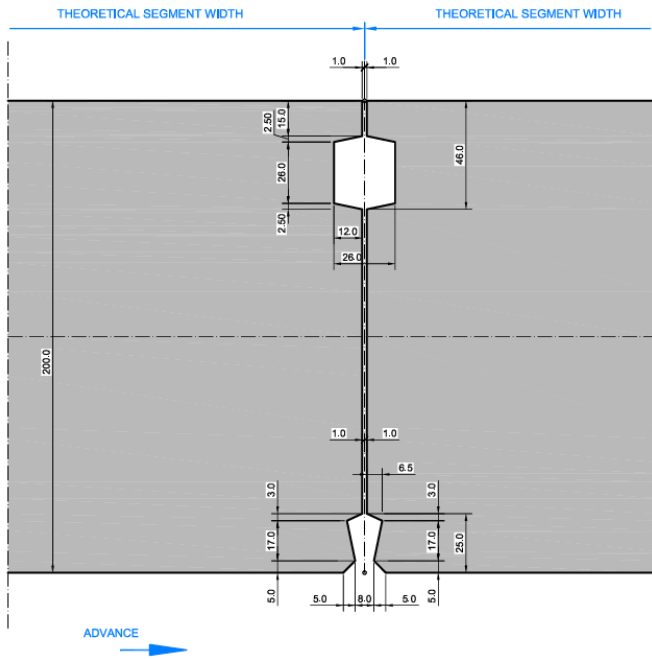
GENERAL LAYOUT VIEW IN ADVANCE

1 : 25

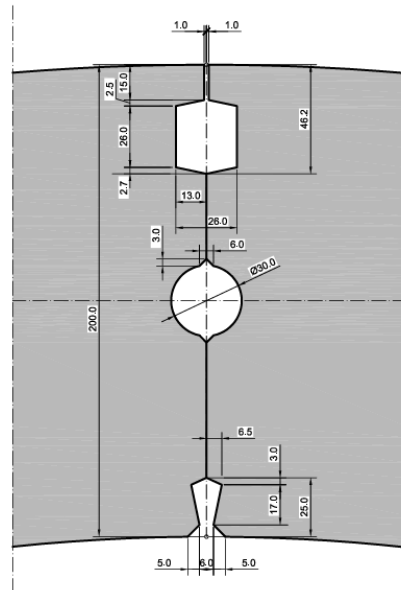




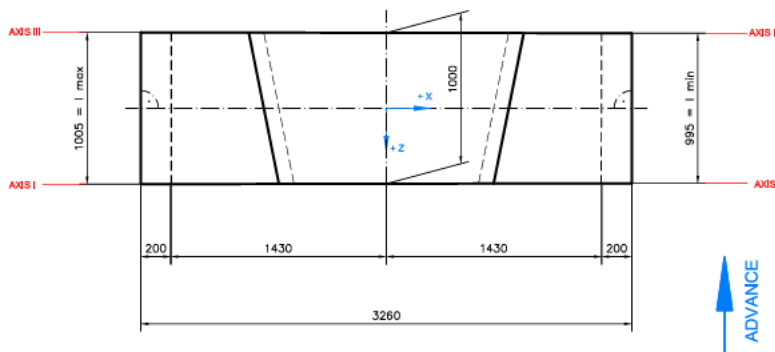
SECTION A - A
CIRCUMFERENTIAL JOINT



SECTION B - B
LONGITUDINAL JOINT (RADIAL)



VIEW A



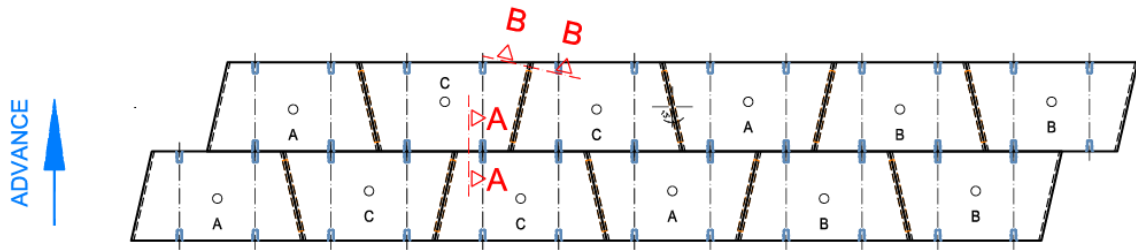
max. l = MAX. LENGTH OF RING
min. l = MIN. LENGTH OF RING

(e) = REFERED TO EXTERIOR RADIUS
(i) = REFERED TO INTERIOR RADIUS

ALL DIMENSIONS IN mm AND DEGREE



DEVELOPEMENT OF INTERNAL SOFFIT N.T.S.



Availability: 4 months refurbished, available now as is.

Price: below 3 million

Condition: refurbished, ready for project

Engineering support – available.

Owner – SMP Engineering LLC

www.smp-tunnel.com

smp@smp-tunnel.com

+1 847 997 39 17

The price is provided by phone or email